

About SATO

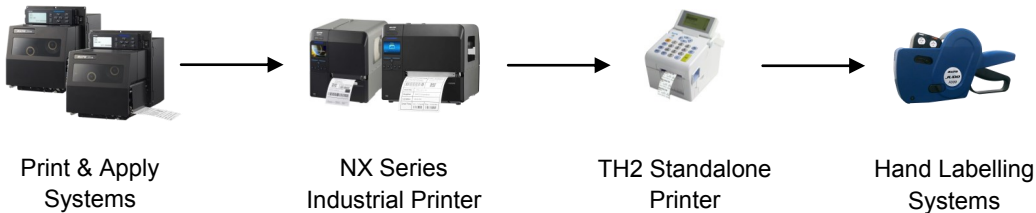


SATO is a global label and printer manufacturer. We provide Auto-ID solutions that connect people, goods and information. We serve a diverse range of customers, delivering end-to-end solutions that streamline operations, empower workforces and help customers reduce their environmental impact.

SATO in the UK

SATO UK delivers a comprehensive range of labelling and auto-identification solutions for the Food, Retail, Industrial, Logistics, Healthcare and Government sectors.

- Labels manufactured in our Essex factory
- Our in-house Studio can create bespoke label designs
- Friendly Customer Service teams
- Workshop and Technical departments
- Strong Partner network
- Hardware, Software and Consumables
- Market leader in handheld labellers, automatic print and apply systems and RFID technology.



Food Labelling Solutions



01255 252700

internalsales-uk@sato-global.com

What is your current labelling process?

Are you using a day dot or colour code system or are your staff wasting valuable time hand writing important information?

- Rely solely on human input ❌
- Not enough nutritional information ❌
- No allergen advice ❌
- No traceability ❌
- Time consuming ❌

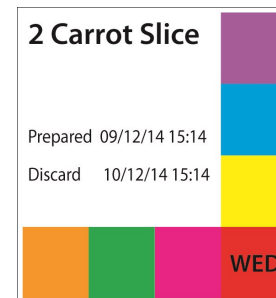


MADE	TIME
20.02.06.10	
READY	TIME
20.02.06.10	
DISCARD	TIME
05.02.06.10	

Product:		Initials:
	Date	Time
Made:		
Ready:		
Discard:		

Additional Benefits

- Meets new food allergen regulations
- Clear and concise labelling
- Eliminates human error
- Reduces food wastage
- Anti-microbial casing
- Standalone - no PC required
- Dissolvable materials available
- Real time labelling
- Less down time



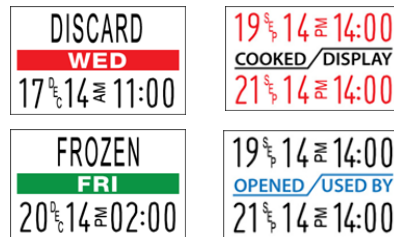
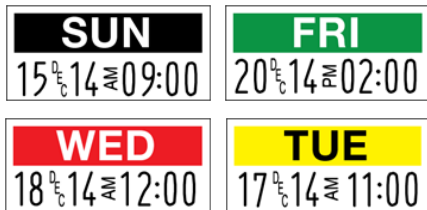
Hand Held Labelling Solution

The **SATO KENDO & JUDO** series of hand labellers are now enhanced in versatility and value for money with added applications for Food Safety Labelling, to assist in meeting Food Safety Regulations.

Specifically designed for use in all types of food outlets and restaurants.

KENDO
FOOD

JUDO
FOOD



26mm x 12mm Label Size

26mm x 16mm Label Size

Colour coded days of the week labels

- Keep on top of food rotation
- Supports food safety regulations
- Hand applied and hand written - flexibility for individual requirements
- Use in all types of food preparation areas
- 19mm in diameter
- 1,000 labels per roll

USE BY
05MAR2015

BEST BEFORE
05MAR2015

SATO's Printer Solution

SATO's DateRight applications are specifically designed for use in all food preparation areas, quick service outlets and restaurants.

The TH2 Standalone printer is compact and lightweight, and can function as a standalone smart printer with a battery and built-in keypad. The anti-microbial casing is suitable for food preparation, where hygiene control and contamination prevention are vital.

This printer has Windows-based label design software and ensures that listed allergen names and any associated descriptions are automatically accentuated on the product label.



Labelling Requirements

Labelling is essential to your business. If an item of food is labelled incorrectly or not at all, it may lead to business closure or could be life threatening to your customers. Especially if allergen information isn't in place.

What are the latest requirements?

- Ingredients by quantity
- Energy content
- High caffeine content
- Vegetable oil type
- Water content
- Dates
- Pricing



ALLERGENS must be emphasised in the ingredients list. It is also advised to be able to have full traceability within your business, of who labelled what item.

For further information on label legislation please visit:

www.satoeurope.com

OR

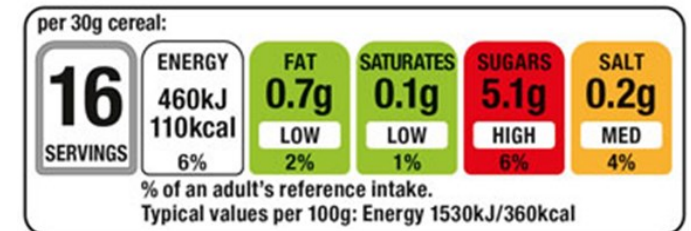
www.food.gov.uk

www.satoeurope.com

Are your products colour-coded?

Under new European Union rules, manufacturers will be required to provide particular nutritional information by **December 2016**. But any manufacturer that chooses to provide front-of-pack information must comply with the current EU regulation.

Currently, food and drink labels often differ in the range of nutritional information provided. Currently, there is no law forcing retailers and manufacturers to display such information unless the product makes a nutritional claim. For instance, nutritional information must be on a product that claims to be 'low fat' or if vitamins or minerals have been added to the product.



www.satoeurope.com